

Sample Information

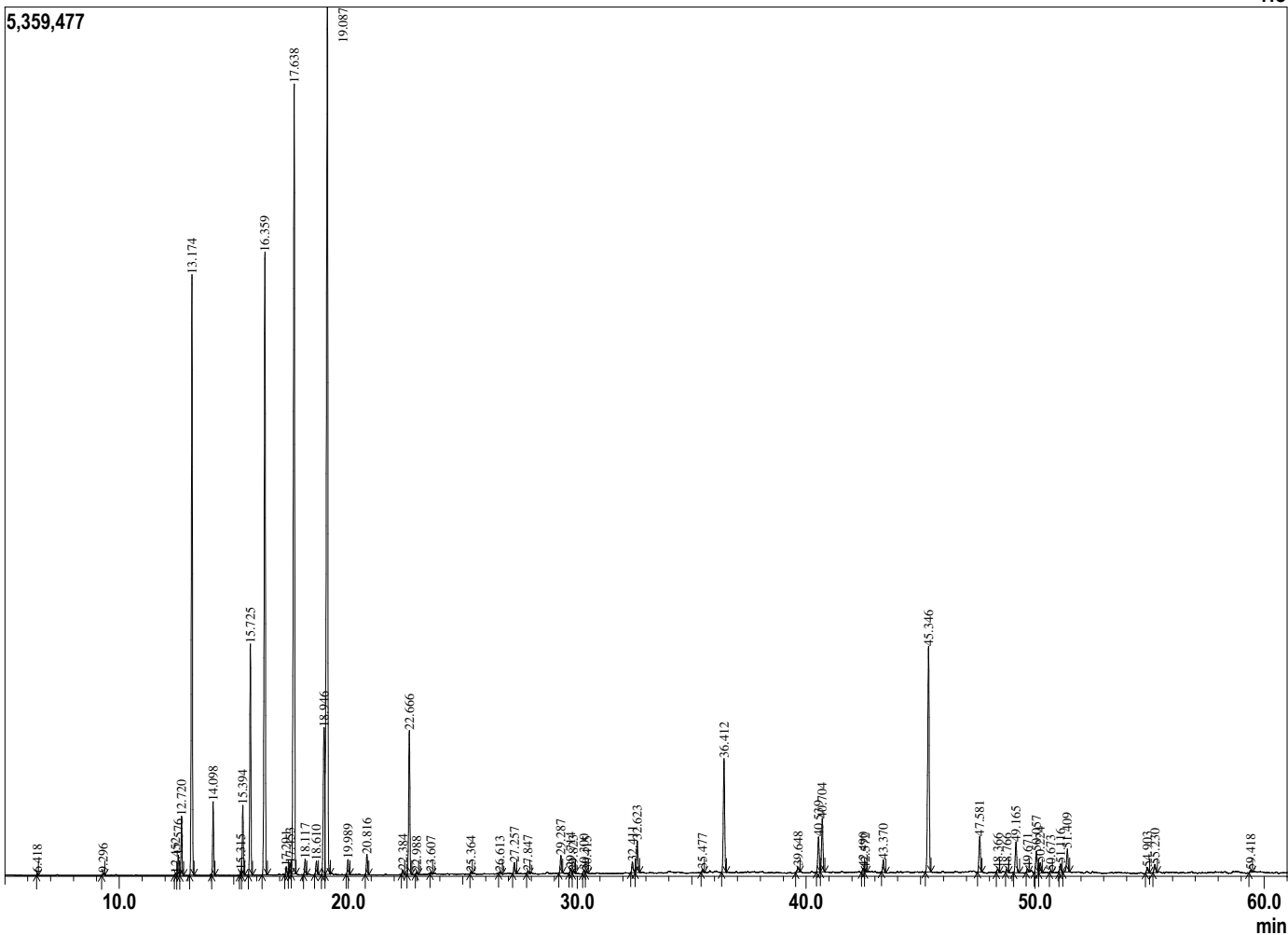


Analyzed by : Dr. Prabodh Satyal
 Analyzed : 11/5/2018 10:01:11 PM
 Sample Type : Essential Oil
 Sample Name : Pinus Migo
 ARC# : 18085SLOE SAP# 0000
 Injection Volume : 0.10
 Data File : C:\Users\user\Desktop\QA Data File\psatyal\Pijus Migo APRC Re18085SLOE.qgd

Peak Report TIC

R.Time	Name	Area%
6.418	Toluene	0.02
9.296	Hexenol<3Z->	0.04
12.452	Pinene isomer	0.03
12.576	Tricyclene	0.35
12.720	Thujene<alpha->	1.01
13.174	Pinene<alpha->	11.00
14.098	Camphene	1.32
15.315	1,3,5-Cycloheptatriene, 3,7,7-trimethyl-	0.08
15.394	Sabinene	1.33
15.725	Pinene<beta->	4.45
16.359	Myrcene	13.16
17.291	Hexenyl acetate<3E->	0.16
17.453	Phellandrene<alpha->	0.23
17.638	Carene<delta-3->	17.96
18.117	Terpinene <alpha->	0.31
18.610	Cymene<para->	0.29
18.946	Limonene	4.22
19.087	Phellandrene <beta->	22.04
19.989	Ocimene<(E)-beta->	0.30
20.816	Terpinene<gamma->	0.43
22.384	Mentha-2,4(8)-diene <para->	0.10
22.666	Terpinolene	3.09
22.988	Cymenene<para->	0.05
23.607	Linalool	0.03
25.364	Menth-2-en-1-ol<cis-para->	0.04
26.613	Menth-2-en-1-ol <trans-p>	0.04
27.257	Citronellal	0.25
27.847	Decanone <4->	0.06
29.287	Terpinen-4-ol	0.40
29.714	Cymen-8-ol<para>	0.12
29.823	Ocimenol <cis-beta>	0.07
30.300	Terpineol <alpha->	0.08
30.415	Pijus Migo	0.04
32.411	Citronellol	0.29
32.623	Thymol, methyl ether	0.76
35.477	Isopulegyl acetate <neo>	0.07
36.412	Bornyl acetate	2.77
39.648	Terpinyl acetate<4>	0.15
40.539	Terpinyl acetate<alpha->	0.87
40.704	Citronellyl acetate	1.28
42.490	Copaene <alpha->	0.12
42.572	Geranyl acetate	0.07
43.370	Elemene <beta>	0.30
45.346	Caryophyllene <trans->	6.04
47.581	Humulene<alpha->	0.93
48.366	Sesquisabinene	0.10
48.766	Cadina-1(6),4-diene <trans>	0.08
49.165	Germacrene D	0.80
49.671	Selinene <beta->	0.07
50.057	Bicyclogermacrene	0.60
50.224	Muurolole <alpha>	0.26
50.673	Exo-bornyl isovalerate	0.04
51.116	Amorphene <delta>	0.23
51.409	Cadinene <delta>	0.62
54.903	Germacrene-D-4-ol	0.16
55.230	Caryophyllene oxide	0.23
59.418	Murrolol<epi-alpha->	0.06
		100.00

Chromatogram Pinus Migo C:\Users\user\Desktop\QA Data File\psatyal\Pijus Migo APRC Re18085SLOE.qgd



Comments:
 PASS

Typical Ranges of Main Components: