

Sample Information

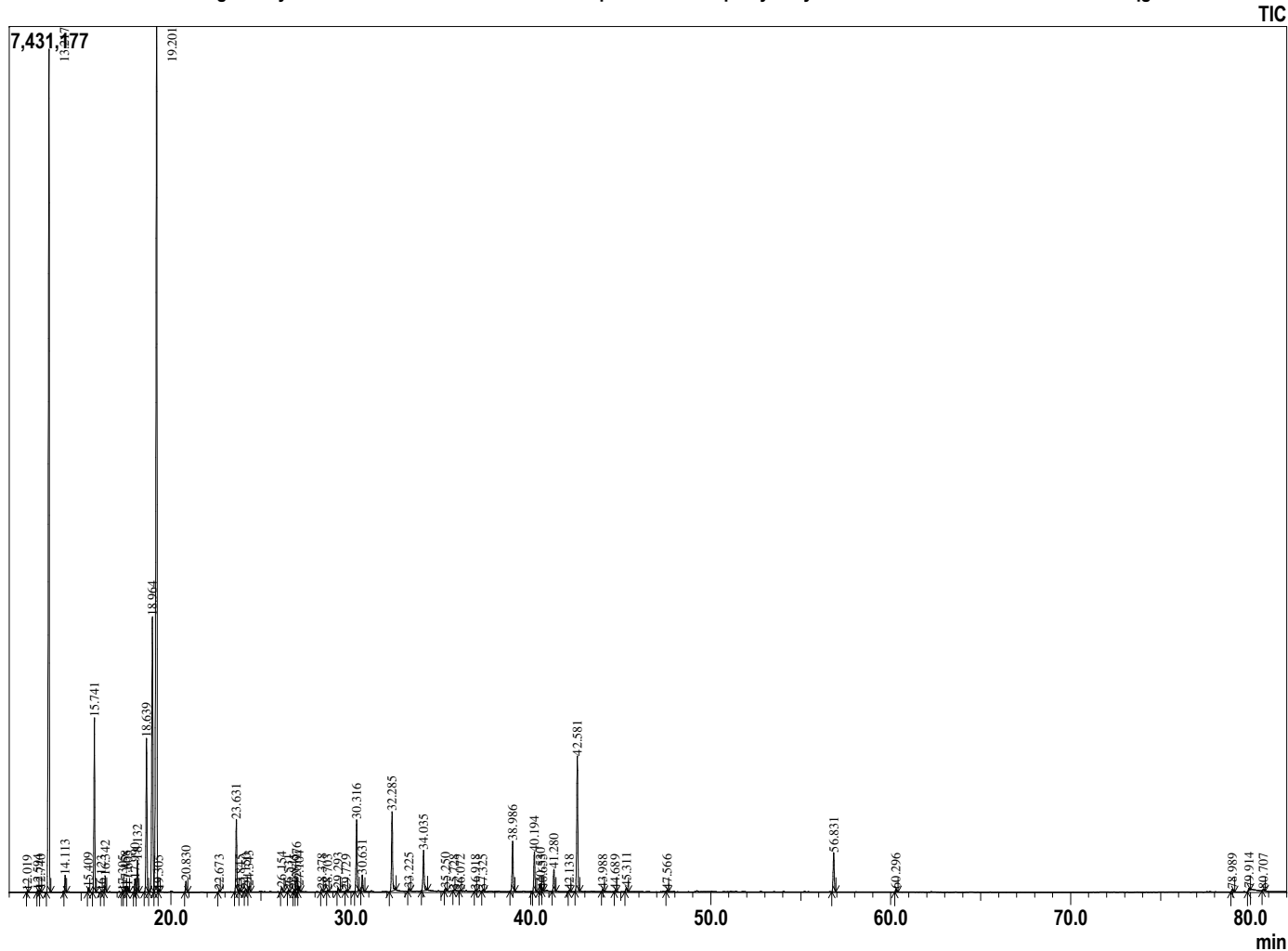


Peak Report TIC

Analyzed by : Dr. Prabodh Satyal
 Analyzed : 11/3/2018 5:05:25 PM
 Sample Type : Essential Oil
 Sample Name : Myrtus Communis
 ARC# : 18102SLOE SAP# 0000
 Injection Volume : 0.10
 Data File : C:\Users\user\Desktop\QA Data File\psatyal\Myrtus Communis APRC Re 18102SLOE.qgd

R.Time	Name	Area%
12.019	Isobutyl isobutyrate	0.03
12.594	Tricyclene	0.05
12.740	Thujene<alpha->	0.06
13.217	Pinene<alpha->	25.18
14.113	Camphene	0.42
15.409	Sabinene	0.12
15.741	Pinene<beta->	4.54
16.123	Menthene<3-p>	0.02
16.342	Myrcene	0.39
17.305	Mentha-1(7),8-diene<para->	0.03
17.458	Phellandrene<alpha->	0.17
17.605	Carene<delta-3->	0.16
17.990	Cineole<1,4->	0.38
18.132	Terpiene <alpha>	0.89
18.639	Cymene<para->	4.75
18.964	Limonene	10.14
19.201	Cineole<1,8->	30.36
19.305	Ocimene<Z>-beta->	0.04
20.830	Terpinene<gamma->	0.32
22.673	Terpinolene	0.04
23.631	Linalool	2.26
23.845	Methyl butyl-2-methyl butyrate<2->	0.04
24.150	Thujone<cis->	0.08
24.343	Pinene oxide<alpha->	0.16
26.154	Terpin-3-en-1-ol	0.16
26.531	Pinocarveol<trans->	0.04
26.845	Verbenol<trans->	0.08
26.976	Camphor	0.45
27.104	Terpineol <cis-beta->	0.18
28.378	Terpineol <trans-beta>	0.08
28.703	Borneol	0.04
29.293	Terpinen-4-ol	0.12
29.729	Cymen-8-ol<para>	0.03
30.316	Terpineol<alpha->	2.39
30.631	Terpineol<gamma->	0.53
32.285	Nerol	2.64
33.225	Neral	0.10
34.035	Geraniol	1.47
35.250	Geranial	0.09
35.728	Ascaridol glycol <E>	0.03
36.072	Terpinyl acetate <beta>	0.03
36.918	Terpinen-4-ol SM2a	0.04
37.325	Pinene alpha d AM2	0.05
38.986	Myrtenyl acetate	1.73
40.194	Triacetin	1.33
40.530	Terpinyl acetate<alpha->	0.23
40.655	Terpinyl acetate <isomer>	0.04
41.280	Neryl acetate	0.73
42.138	Myrtus Communis	0.03
42.581	Geranyl acetate	4.73
43.988	Methyleugenol	0.07
44.689	Longifolene	0.04
45.311	Caryophyllene <trans>	0.15
47.566	Humulene<alpha->	0.04
56.831	Asarone-Z	1.35
60.296	Asarone<E>	0.10
78.989	Pseudo phytol<6Z,10E->	0.11
79.914	Ricinaldic acid lactone	0.09
80.707	Pseudo phytol<6E,10E->	0.06
		100.00

Chromatogram Myrtus Communis C:\Users\user\Desktop\QA Data File\psatyal\Myrtus Communis APRC Re 18102SLOE.qgd



Comments:
PASS

Typical Ranges of Main Components: