

Sample Information

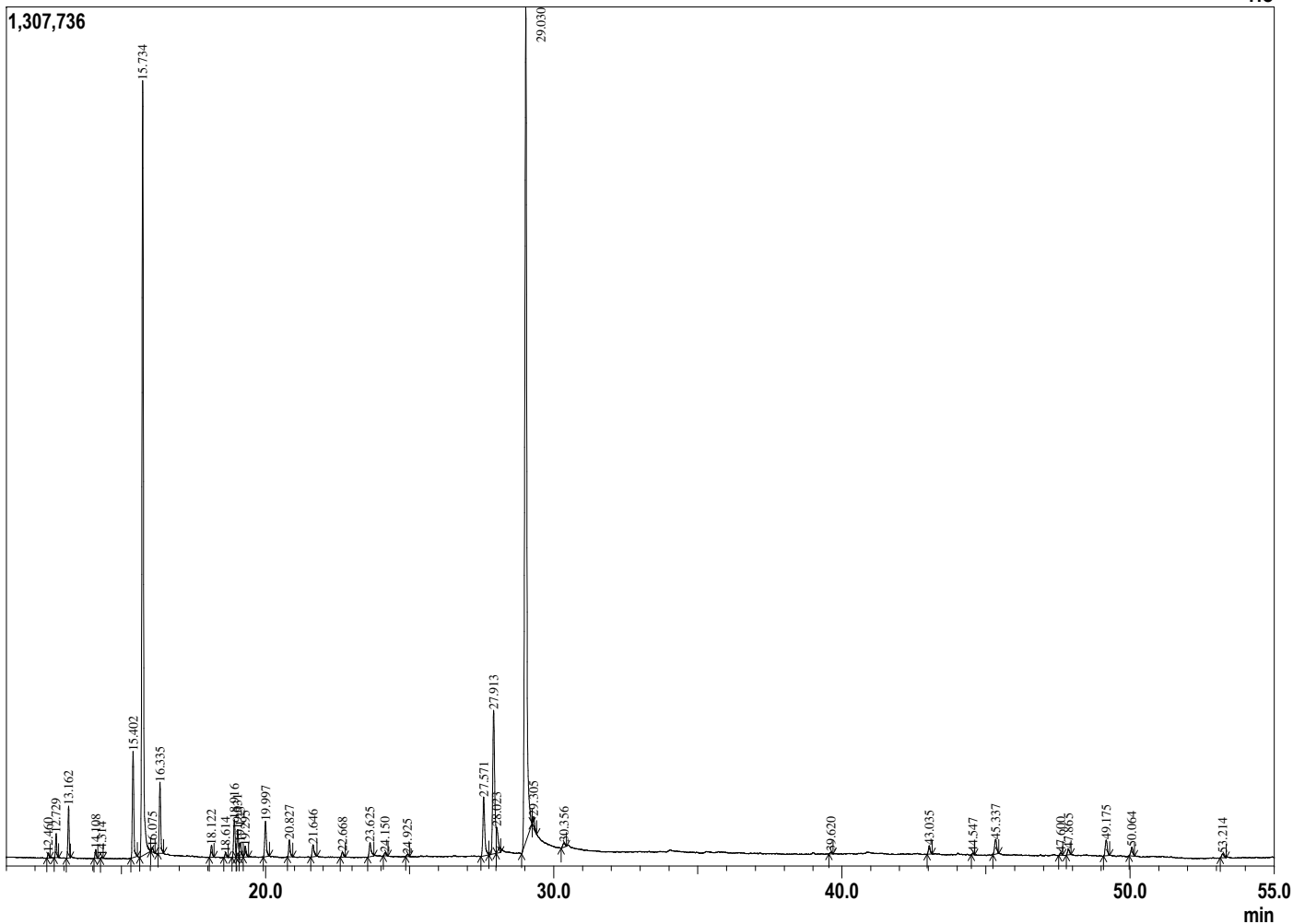


Peak Report TIC

Analyzed by : Dr. Prabodh Satyal  
 Analyzed : 11/5/2018 9:05:19 AM  
 Sample Type : Essential Oil  
 Sample Name : Hyssopus Offic.  
 ARC# : 18134SLOE SAP# 0000  
 Injection Volume : 0.10  
 Data File : C:\Users\user\Desktop\QA Data File\psatyal\Hyssopus Offic. APRC Re18134SLOE.qgu

R.Time	Name	Area%
12.460	Pinene isomer	0.16
12.729	Thujene<alpha->	0.72
13.162	Pinene<alpha->	1.61
14.108	Camphene	0.27
14.314	Thuja-2,4(10)-diene	0.04
15.402	Sabinene	3.65
15.734	Pinene<beta->	28.12
16.075	Octanone<3->	0.16
16.335	Myrcene	2.42
18.122	Terpiene <alpha>	0.44
18.614	Cymene<para->	0.19
18.916	Limonene	1.41
19.031	Phellandrene <beta>	1.05
19.123	Cineole<1,8->	0.64
19.295	Ocimene<(Z)-beta->	0.44
19.997	Ocimene<(E)-beta->	1.39
20.827	Terpinene<gamma->	0.65
21.646	Sabinene hydrate<cis->	0.56
22.668	Terpinolene	0.21
23.625	Linalool	0.71
24.150	Thujone<cis->	0.14
24.925	Thujone<trans->	0.10
27.571	Myrtenyl methyl ether	2.77
27.913	Pinocamphone<trans->	6.89
28.023	Pinocarvone	1.24
29.030	Pinocamphone<cis->	40.29
29.305	Terpinen-4-ol	0.40
30.356	Myrtenal	0.24
39.620	Bicycloelemene	0.08
43.035	Bourbonene<alpha->	0.36
44.547	Gurjunene<alpha->	0.06
45.337	Caryophyllene <trans->	0.75
47.600	Humulene<alpha->	0.11
47.865	Aromadendrene allo	0.27
49.175	Germacrene D	0.77
50.064	Bicyclogermacrene	0.45
53.214	Elemol <alpha->	0.23
		100.00

Chromatogram Hyssopus Offic. C:\Users\user\Desktop\QA Data File\psatyal\Hyssopus Offic. APRC Re18134SLOE.qgu



Comments:  
**PASS**

Typical Ranges of Main Components: